

## FXC

### FXC SERIES BENDING BEAM LOAD CELLS



Bending beam load cells for approved weighing, automatic systems, dosage.

**CAPACITIES (kg):** 10, 20, 50, 100, 200, 300, 500.

**OIML R60. C3** precision class.

**Stainless steel. IP68** protection.

Working in cooperation with:

**CBH VAEGTE APS**

VONSILDVEJ 186 - 6000 - KOLDING - DENMARK  
Tel. 004575567310 Fax. 004575567320  
info@cbh-vaegte.dk

The best solution  
for advanced industrial  
applications

## MAIN FEATURES

- C3 PRECISION CLASS
- STAINLESS STEEL
- IP68 PROTECTION
- MAX. CAPACITIES FROM 10 TO 500 kg
- SHIELDED CONNECTION CABLE
- OIML CERTIFICATE AVAILABLE UPON REQUEST
- TEST CERTIFICATE AVAILABLE UPON REQUEST

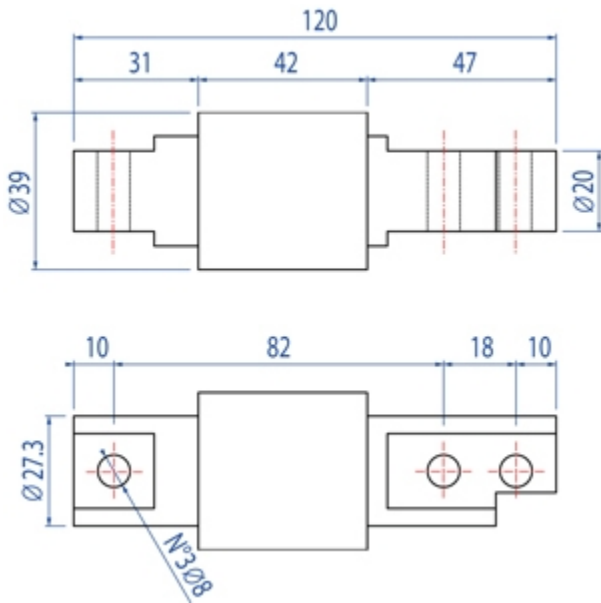
## TECHNICAL FEATURES

- Minimum load cell verification interval:  $V_{min} = E_{Max} / 10.000$
- Maximum number of verification intervals:  $n_{LC} = 3000$
- Full Scale Output:  $2mV/V \pm 1\%$
- Combined error: 0,017% of Full Scale Output (F.S.)
- Non-Repeatability: 0,015% F.S.
- Temperature effect on zero:  $\pm 0,0014\% / ^\circ C$
- Temperature effect on full scale output:  $\pm 0,0014\% / ^\circ C$
- Compensated Temperature Range:  $-10^\circ C / +40^\circ C$
- Operating Temperature Range:  $-20^\circ C / +60^\circ C$
- Creep error after 30 minutes  $\pm 0,025\%$  F.S.
- Maximum tolerated excitation voltage: 15 VDC
- Input Resistance:  $385 \pm 20$  Ohm
- Output Resistance:  $350 \pm 5$  Ohm
- Insulation Resistance:  $> 5000$  MOhm
- Safe Overload: 150% F.S.
- Ultimate Overload: 200% F.S.
- Nominal displacement:  $< 0,4$  mm
- 4-wire shielded cable, 3m long, 4mm diameter.

## ATEX VERSION

- The CCATEX certificate makes the load cell suitable for use in hazardous areas with protection methods according to:  
ATEX II 1G Ex ia IIC T6 (Ta  $-20 \div +40^\circ C$ ) TX (Ta  $-20 \div +65^\circ C$ ) Ga  
ATEX II 1D Ex ta IIIC TX $^\circ C$  (Ta  $-20 \div +40^\circ C$ ) TX $^\circ C$  (Ta  $-20 \div +65^\circ C$ ) Da IP65.  
The certificate includes the manual and the ATEX CE conformity declaration (available in EN, DE, FR, and IT).
- IMPORTANT: the certificate refers to the single load cell. For systems with more load cells, it is necessary to order one certificate for each load cell.

## DETAIL 1






Dimensions (mm)

Wiring Code	
Colour	Function
--	SHIELD
BLACK	OUTPUT +
RED	INPUT +
BLUE	OUTPUT -
WHITE	INPUT -

## VERSIONS

Available versions

Codice	Max (kg)
FXC10-1 	10
FXC20-1 	20
FXC50-1 	50
FXC100-1 	100
FXC200-1 	200
FXC300-1 	300
FXC500-1 	500



[www.diniargeo.com](http://www.diniargeo.com)

“YOUR WORLDWIDE PARTNER FOR WEIGHING”

DINI ARGEO  
FRANCE sarl  
France

DINI ARGEO  
GMBH  
Germany

DINI ARGEO  
UK Ltd  
United Kingdom

DINI ARGEO WEIGHING  
INSTRUMENTS Ltd  
China

DINI ARGEO  
OCEANIA  
Australia



**COMPANY HEADQUARTERS**

Via Della Fisica, 20  
41042 Spezzano di Fiorano - Modena - Italy  
Tel. +39.0536 843418

**CBH VAEGTE APS**

VONSILDVEJ 186 - 6000 - KOLDING - DENMARK

Tel. 004575567310 Fax. 004575567320

[info@cbh-vaegte.dk](mailto:info@cbh-vaegte.dk)

SALES AND TECHNICAL ASSISTANCE SERVICE